

CHASE-DURER

OPERATION MANUAL

**ABYSS 1000
PROFESSIONAL AUTOMATIC**

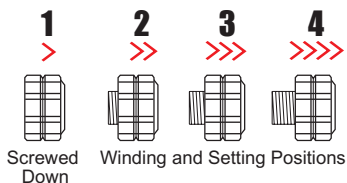


Table of Contents

◆ Display and Screw Down Crown	1
◆ Winding / Setting Local Time	2
◆ Setting Date	3
◆ Adjusting the Bracelet	4
◆ Specifications	5

Unidirectional Bezel

WATCH HANDS



Screw Down Crown

1 > Push crown in and turn clockwise until tight. Turn crown counterclockwise until you no longer feel the threads gripping; crown can now be pulled out to positions **2 - 4**.

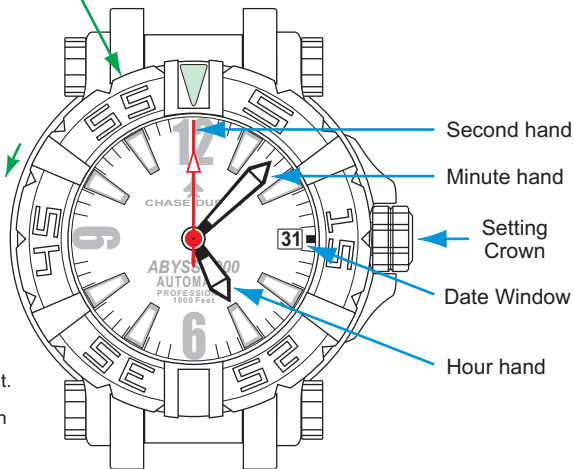
2 >> Winding position.

3 >>> **Date** adjustment position.

4 >>>> Stops second hand, setting minute and hour hands position.

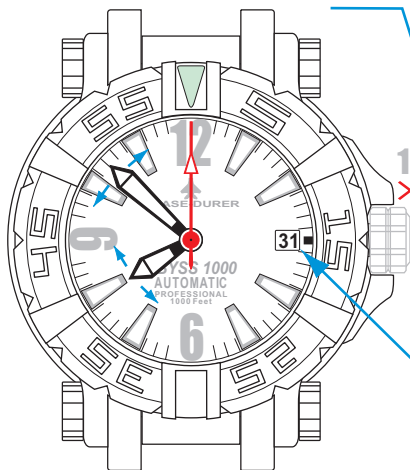
WARNING: Crown must be locked down in position **1** at all times, use positions **2 - 4** for winding and adjustments only.

NOTE - Failure to screw down crown to resist moisture will void your warranty

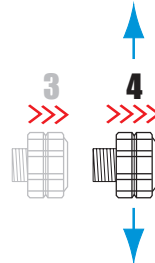


NOTE: If your watch stops, it must be wound by turning the crown clockwise approximately 25 full turns. Although the watch is automatic, the mainspring may not have enough reserve to keep it running accurately. Once wound, the normal movement of wearing the watch will provide enough power to keep accurate time.

Position **2** of setting crown is used for winding only



Setting crown in position **4** is used to adjust both hour and minute hands*

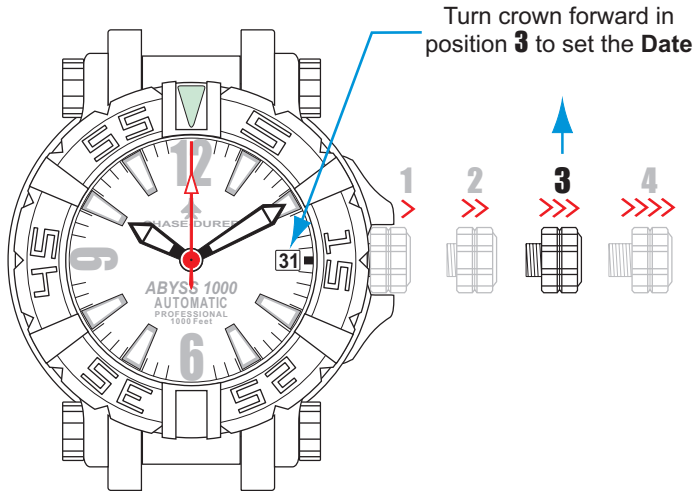


Date changes each time hour hand passes midnight (24:00 hours)

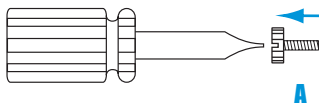
*Setting crown in position **4** Stops the Second Hand to allow synchronizing with a time signal.

Note - When setting the time, pay attention to the **Date** window to make sure you are setting the time correctly for AM or PM. The **Date** begins changing at 11:30PM (23:30 hours).

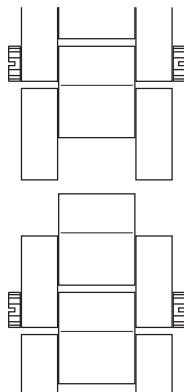
Date changes each time the hour hand passes midnight (24:00 hours)



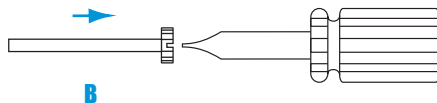
NOTE* Use flat blade screwdrivers that fit the screws.



Place a small drop of LOCTITE® 222 or clear nail polish on the screw thread to prevent it from loosening and getting lost.



If the screwdrivers are too small or too large, they may damage the screws and will be more likely to slip and damage the bracelet's finish.



Adjust the bracelet by removing links in a simple procedure involving just two small screwdrivers. Carefully insert the blades of the screwdrivers in opposing screw slots and turn counterclockwise to loosen and remove retaining screw **A** from connecting shaft **B**.

Pull connecting shaft **B** straight out to open the bracelet and repeat the procedure for each link that needs to be removed.

Reassemble by reinserting connecting shaft **B** to close the bracelet and secure with screw **A**.

Take care not to over tighten the screws or mar the bracelet's fine finish.

NOTE* When removing more than one link, alternate from either side of the buckle so the buckle and watch case remain relatively centered on the bracelet.

ABYSS 1000 PROFESSIONAL AUTOMATIC

Technical Specifications

- ◆ SWISS Made, 25-jewel precision ETA 2824-2 automatic movement.
- ◆ Unidirectional bezel.
- ◆ Display window for date.
- ◆ Super-LumiNova advanced illumination system on hands & indexes.
- ◆ Solid 316L stainless steel case.
- ◆ Bracelet in solid 316 stainless steel with link screws instead of pins and specially designed deployment buckle.
- ◆ Screw-locked crown and screw-in exhibition back.
- ◆ Water resistant to 330m/1000 feet.
- ◆ Scratch-resistant sapphire crystal.
- ◆ Diameter - 44mm.
- ◆ Serial numbered.
- ◆ 2 year limited international warranty.

ETA Cal. 2824-2
(ABYSS 1000 PROFESSIONAL)

CHASE-DURER

9601 WILSHIRE BLVD. #1118

BEVERLY HILLS, CA 90210 USA

TEL: 800.544.4365 / 310.550.7280

FAX: 310.550.0830

E-MAIL: CUSTOMER-SERVICE@CHASE-DURER.COM

www.chase-durer.com