

**OPERATION MANUAL**

**CLOUD CHASER  
AUTOMATIC**

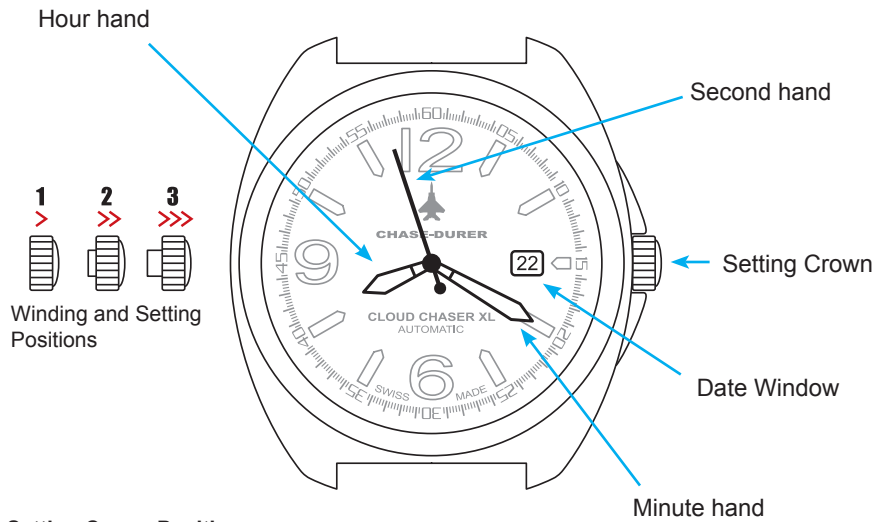


**SPECIFICATIONS**

**CLOUD CHASER AUTOMATIC**  
Technical Specifications

- SWISS Made, 26-jewel precision SW 200 automatic movement.
- Display window for date.
- Super-LumiNova system on hands and dial.
- Screw-in exhibition back.
- Water resistant to 10atm/333ft
- Scratch-resistant sapphire crystal
- Diameter - 44mm
- Serial numbered.
- 2 year limited international warranty.

## WATCH HANDS

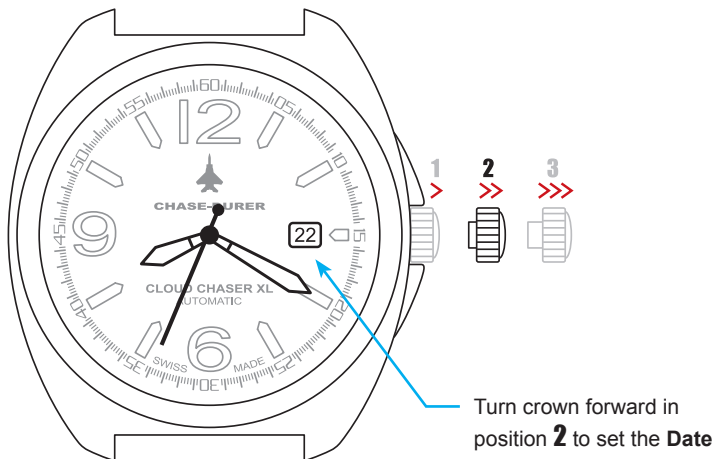


### Setting Crown Positions

- 1 > Winding position.
- 2 >> Date adjustment position.
- 3 >>> Stops second hand, setting minute and hour hands position.

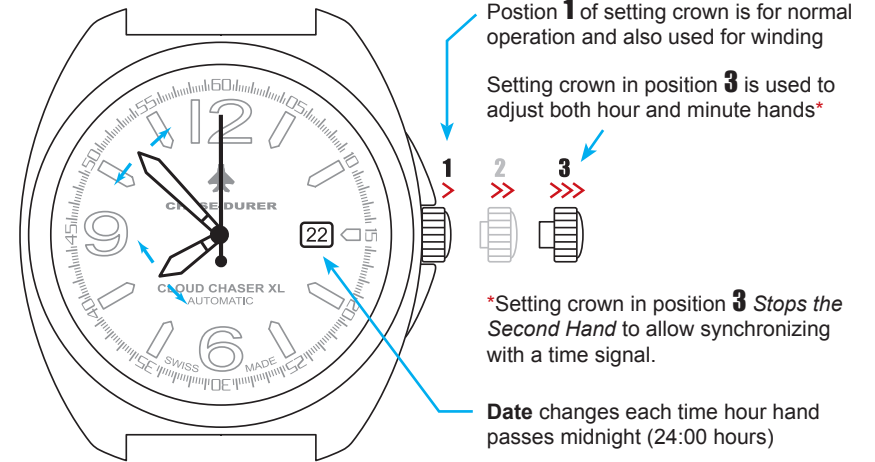
## SETTING DATE

Date changes each time the hour hand passes midnight (24:00 hours)



## WINDING / SETTING LOCAL TIME

**NOTE:** If your watch stops, it must be wound by turning the crown clockwise approximately 25 full turns. Although the watch is automatic, the mainspring may not have enough reserve to keep it running accurately. Once wound, the normal movement of wearing the watch will provide enough power to keep accurate time.



**Note** - When setting the time, pay attention to the Date window to make sure you are setting the time correctly for AM or PM. The Date begins changing at 11:30PM (23:30 hours).

### CHASE-DURER

9601 WILSHIRE BLVD. #1118  
 BEVERLY HILLS, CA 90210 USA  
 TEL: 800.544.4365 / 310.550.7280  
 FAX: 310.550.0830  
 E-MAIL: CUSTOMER-SERVICE@CHASE-DURER.COM

[www.chase-durer.com](http://www.chase-durer.com)